



**Agenda Item  
11**

**Report Status**

For information/note           x  
For consultation & views         
For decision                   

**Report to Haringey Schools Forum – 22 October 2015**

**Report Title: EARLY HELP UPDATE**

**Author: Gareth Morgan, Head of Service, Early Help & Prevention**

Contact: Tel 0208 489 4931 Email: [gareth.morgan@haringey.gov.uk](mailto:gareth.morgan@haringey.gov.uk)

**Purpose: To Note**

**Recommendations:**

As previously reported to Schools Forum, the Early Help & Prevention Service and Targeted Response Team (Targeted Response and Youth Justice Service), began operating a locality model on the 5<sup>th</sup> October 2015. This aligns Council's resources more closely with existing school clusters and Children's Centres as part of Haringey's broader 'Early Help Offer'. (Appendix A).

This structure also provides:

- Increased opportunities for partner collaboration.
- Easier alignment of resources with partner agencies for example, Health Visitors, and DWP employment advisers.
- Greater visibility, responsiveness and flexibility to respond to requests for increased support.
- Consolidation of Integrated Family Support Service (Family Support FIP, Haringey Families First, Youth, Community & Participation and the Edge of Care team) into a single, consistent service.
- Targeted Response team.

A recent Ofsted 'keep in touch' visit with the DCS was complimentary and supportive of the direction of travel for Early Help in Haringey. This important step is part of delivering the recommendations arising out of the last Ofsted inspection and the more recent, external, Early Help evaluation. This structure is supported by the parallel introduction of a Single Point of Access (SPA) to all of Children and Young People's Services including Social Care.

The SPA (Single Point of Access) and adjoined MASH (Multi-Agency Safeguarding Hub) teams will allocate new contact/referrals having assessed requests for support in line with the LSCB Thresholds of Need Guidance (2015). Early Help provision will focus on early intervention and the prevention of escalation of family issues by supporting families with needs assessed as below Tier 3 of the LSCB Thresholds. The consistent application of these thresholds will enable services to provide the right response at the right time.

The recent internal re-configuration of Early Help Services has also established the Targeted Response team, to provide targeted family and youth support where there is a risk of family breakdown, and where children / young people are considered to be on the edge of:

- entry to care;
- youth offending;
- gang involvement;
- child sexual exploitation (working with Safer London);
- missing from home/ young runaways;
- having substance misuse issues.

Within the Targeted Team, specialist workers in substance misuse, domestic abuse and mental health will provide consultancy and workforce development to the wider Early Help staff (including partners) and support the early identification, assessment and access for families in need of specialist support. They will also carry a small case load.

DSG funds allocated to Early Help contribute significantly to the overall early help system funding.

- DSG funding is allocated to deliver front line practitioner support.
- Currently the service is carrying 3 family support worker vacancies out of an establishment of 45 case-holding practitioners.
- Recruitment is ongoing and full establishment is anticipated by January 2016.
- By adopting this principle we may end the financial year with a small DSG under-spend which would be returned to Schools Forum.

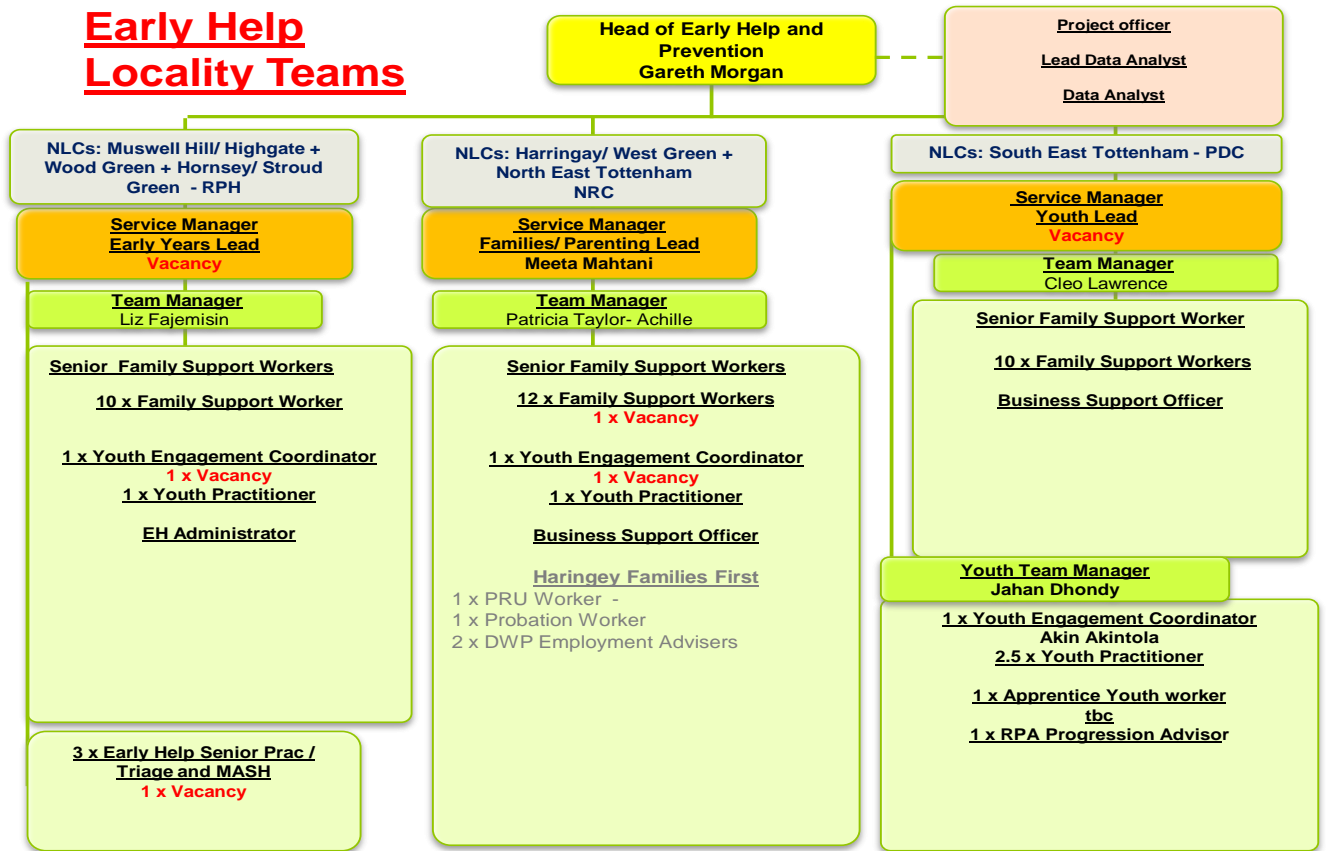
A key aspect of the new locality model is to ensure that we forge effective local links into existing networks, to harness and work alongside local and community resources to build the capacity for early help provision in each area. Locality staff are now initiating local engagement at the most appropriate level, so that regular and meaningful dialogue with partners and stakeholders becomes the norm. To this end, we have named linked workers with every Children’s Centre and Team Managers are in the process of making direct links to every school. We are committed to working closely with NLC groups to discuss vulnerable families, children and young people and review the effectiveness of local arrangements. There is a clear expectation that Service/Team managers will be available to provide a consistent presence at these meetings.

The three Locality Teams – West, Central and East are consistent in terms of staff resource although the geographic area covered varies between each team, reflecting the assessment of need conducted as part of the planning stage. The Locality structure and contacts are reproduced below:

<b>Locality Team</b>	<b>NLC’s covered</b>	<b>Office location</b>	<b>Managers</b>	<b>Contact number</b>
West Locality Team	Muswell Hill/Highgate Wood Green Hornsey/Stroud Green	River Park House 2 <sup>nd</sup> Floor 225 High Road N22 8HQ	Team Manager Liz Fajemisin	0208 489 5814
Central Locality Team	Haringey/West Green North East Tottenham	Neighbourhood Resource Centre (NRC) 177 Park Lane London N17 0HJ	Service Manager Meeta Mahtani  Team Manager Patricia Taylor-Achille	0208 489 2403
East Locality Team	South East Tottenham	Professional Development Centre (PDC) Downhills Park Road, London N17 6AR	Team Manager Cleo Lawrence	0208 489 5073
Targeted Response Team	Borough-wide	4 Pulford Road Tottenham N15 8HQ	Acting Team Manager Manuela Cardoso	0208 489 2221

# APPENDIX A

## Early Help Locality Teams



# Targeted Response and Youth Justice

